


**EVIS EXERA II BRONCHOVIDEOSCOPE OLYMPUS BF TYPE Q180**

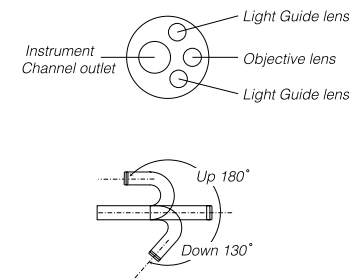
**Main Features**

- Superior image quality and a larger image size redefines examination and treatment in the bronchial tree.
- Despite superior image quality, this scope features a slim design — measuring 5.1 mm in diameter at the insertion tube and 5.5 mm in diameter at the distal end.
- Standard 2.0 mm diameter channel to accommodate a wide variety of endo-therapy accessories.
- Compatible only with Olympus electrosurgical devices.
- Fully compatible with the Olympus CV-160 and CV-140 video processors.
- Scope ID function stores individual scope information and displays it on the monitor to help facilitate management in pulmonary labs and operating rooms.



**Specifications**

Optical System	Field of view	120°
	Direction of view	0° (Forward viewing)
	Depth of field	3 ~ 100 mm
Insertion Tube	Distal end outer diameter	5.5 mm
	Insertion tube outer diameter	5.1 mm
	Working length	600 mm
	Channel inner diameter	2.0 mm
Instrument Channel	Minimum visible distance	3 mm from distal end
	Endo therapy accessory entrance/exit position in field of view	
	Angulation range	UP 180°, DOWN 130°
High Frequency Compatibility		YES (Compatible only with Olympus devices)
Total Length		870 mm



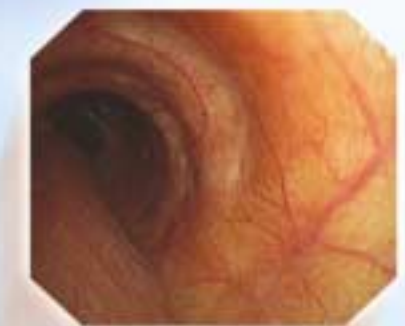
**OLYMPUS**

Your Vision, Our Future

EVIS EXERA II BRONCHOVIDEOSCOPE  
**OLYMPUS BF TYPE Q180**

**EVIS  
EXERA II**

*BF-Q180—A stunning new level of imaging performance in bronchoscopy*



Specifications, design and accessories are subject to change without any notice or obligation on the part of the manufacturer.

**OLYMPUS**

www.olympus.com

**OLYMPUS MEDICAL SYSTEMS CORP.**  
Shimizu-cho, 2-1 Naito-Shinjuku 2-chome, Shinjuku-ku, Tokyo 163-0814, Japan  
**OLYMPUS MEDICAL SYSTEMS EUROPA GMBH**  
Postfach 10 49 08, 20034 Hamburg / Wardenstrasse 14-18, 20097 Hamburg, Germany  
**OLYMPUS AMERICA INC.**  
2 Corporate Center Drive, Melville, N.Y. 11747-3157, U.S.A.  
**OLYMPUS SURGICAL & INDUSTRIAL AMERICA INC.**  
One Corporate Drive, Orangeburg, New York 10962, U.S.A.  
**OLYMPUS LATIN AMERICA, INC.**  
6100 Blue Lagoon Drive, Suite 390 Miami, Florida 33126-2087, U.S.A.  
**KEYMED LTD.**  
Keymed House, Stock Road, Southend-on-Sea, Essex SS2 5QH, England

**OLYMPUS SINGAPORE PTE LTD.**  
491B River Valley Road #12-01/04 Valley Point Office Tower, Singapore 248373  
**OLYMPUS HONG KONG AND CHINA LIMITED**  
Room 1520-1527, Ocean Centre, 5 Canton Road, Tsimshatsui, Kowloon, Hong Kong  
**OLYMPUS (BEIJING) SALES & SERVICE CO., LTD.**  
Room 1202, NCA Tower, A12 Jianguomenwai Avenue Chaoyang District Beijing, 100022, China  
**OLYMPUS MOSCOW LIMITED LIABILITY COMPANY**  
117007, Moscow, Malaya Koltzovskaya, 10, 10th, 1, 12, Russia  
**OLYMPUS AUSTRALIA PTY LTD**  
31 Gilby Road, Mount Waverley, VIC., 3149, Australia

## Dramatically improved image size and quality in a slim, easy-to-insert design

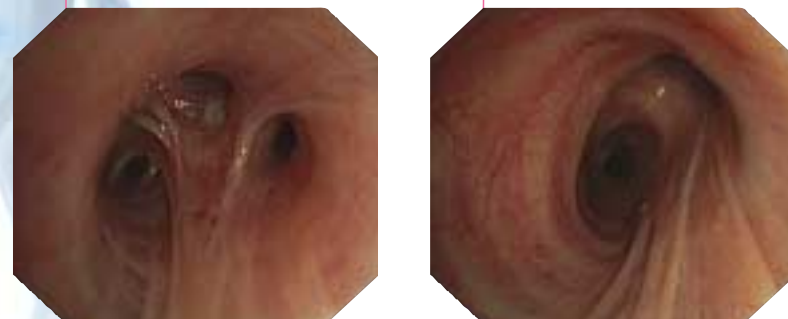
The new BF-Q180 has dramatically improved image quality and greatly enlarged image size in comparison to conventional bronchoscopes, yet its distal end measures just 5.5 mm and its insertion tube a thin 5.1 mm.

See the differences the BF-Q180 offers you

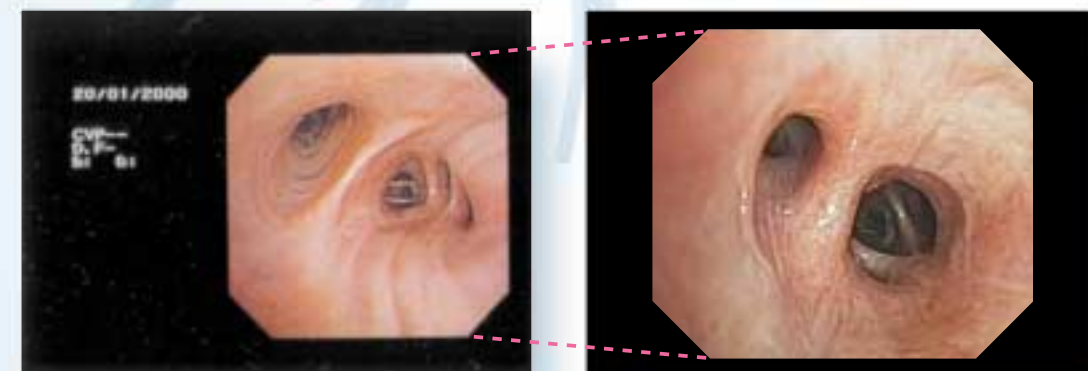


### Superior image quality

The image quality of the BF-Q180 is something new in bronchoscopy. This extraordinary imaging is capable of rendering all details of the bronchial tree with superb sharpness and clarity.

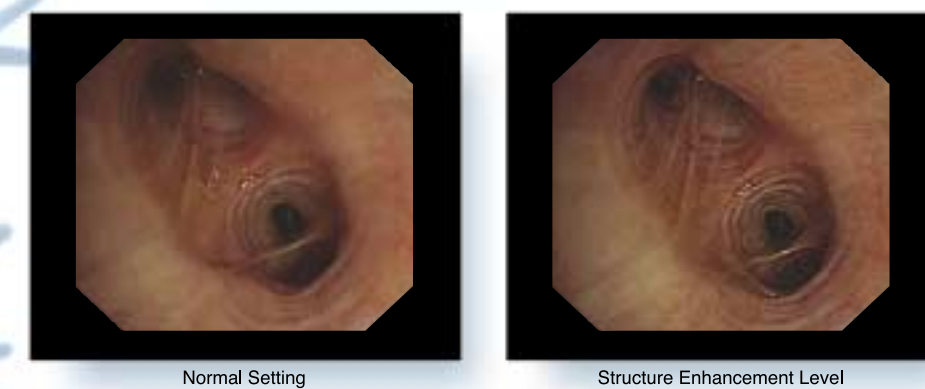


### Enlarged image size for easier observation



The BF-Q180 not only delivers dramatically improved image quality, it also provides a much larger image size than its predecessors. Not only are images clearer and sharper, they are larger and easier to observe so you can perform bronchoscopy with more ease and confidence.

### Structure Enhancement



### Image Quality Comparison

