

**OLYMPUS**<sup>®</sup>

Your Vision, Our Future

EVIS EXERA II BRONCHOVIDEOSCOPE

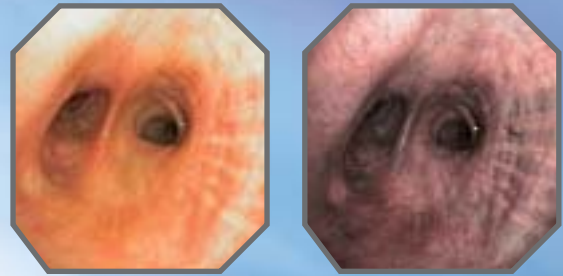
**OLYMPUS BF TYPE P180**

EVIS  
**EXERA II**

*Slim design and excellent image quality  
for routine examinations and treatment*



EVIS EXERA II BRONCHOVIDEOSCOPE  
**OLYMPUS BF TYPE P180**



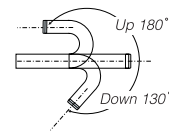
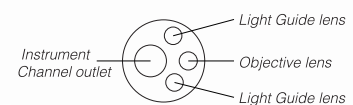
**Main Features**

- Slim design measuring 4.9 mm in diameter at the insertion tube and 4.9 mm in diameter at the distal end.
- Excellent image quality.
- Narrow Band Imaging capability to highlight hidden tissue structures.
- In spite of the slim design, the channel measures a generous 2.0 mm in diameter.
- Compatible with electrocautery and laser treatments.
- Fully compatible with the Olympus CV-180 (CV-160/140) video processor and CLV-180 light source.
- Scope ID function stores individual scope information and displays it on the monitor to help facilitate management in pulmonary labs and operating rooms.



**Specifications**

Optical System	Field of view	120°
	Direction of view	0° (Forward viewing)
	Depth of field	3 ~ 100 mm
Insertion Tube	Distal end outer diameter	4.9 mm
	Insertion tube outer diameter	4.9 mm
	Working length	600 mm
Instrument Channel	Channel inner diameter	2.0 mm
	Minimum visible distance	3 mm from distal end
	Endo therapy accessory entrance/exit position in field of view	
Bending Section	Angulation range	UP 180°, DOWN 130°
Laser Compatibility		Nd: YAG, 810nm diode
Electro-Cautery Instrument Compatibility		YES
Total Length		870 mm



EVIS EXERA II CV-180 Video System Center



Designed to accommodate a wide range of scopes from a myriad of specialties, this leading-edge video processor offers high-resolution images and state-of-the-art image processing capabilities such as Narrow Band Imaging as well as a range of practical digital solutions.

EVIS EXERA II CLV-180 Xenon Light Source



With its powerful 300-watt xenon lamp, this light source unit delivers brilliant, shadow-free illumination and is equipped with filters that have been specially coated for use in Narrow Band Imaging. A new button on the front panel lets you turn the lamp on or off without having to power down the light source unit itself.

Specifications, design and accessories are subject to change without any notice or obligation on the part of the manufacturer.

**OLYMPUS**

www.olympus.com

**OLYMPUS MEDICAL SYSTEMS CORP.**  
 Shinjuku Monolith, 3-1 Nishi-Shinjuku 2-chome, Shinjuku-ku, Tokyo 163-0914, Japan  
**OLYMPUS MEDICAL SYSTEMS EUROPA GMBH**  
 Postfach 10 49 08, 20034 Hamburg / Wendenstrasse 14-18, 20097 Hamburg, Germany  
**OLYMPUS AMERICA INC.**  
 2 Corporate Center Drive, Melville, N.Y. 11747-3157, U.S.A.  
**OLYMPUS SURGICAL & INDUSTRIAL AMERICA INC.**  
 One Corporate Drive, Orangeburg, New York 10962, U.S.A.  
**OLYMPUS LATIN AMERICA, INC.**  
 6100 Blue Lagoon Drive, Suite 390 Miami, Florida 33126-2087, U.S.A.  
**KEYMED LTD.**  
 Keymed House, Stock Road, Southend-on-Sea, Essex SS2 5QH, England

**OLYMPUS SINGAPORE PTE LTD.**  
 491B River Valley Road #12-01/04, Valley Point Office Tower, Singapore 248373  
**OLYMPUS HONG KONG AND CHINA LIMITED**  
 Room 1520-1527, Ocean Centre, 5 Canton Road, Tsimshatsui, Kowloon, Hong Kong  
**OLYMPUS (BEIJING) SALES & SERVICE CO., LTD.**  
 Room 1202, NCI Tower, A12 Jianguomenwai Avenue Chaoyang District Beijing, 100022, China  
**OLYMPUS MOSCOW LIMITED LIABILITY COMPANY**  
 117071, Moscow, Malaya Kaluzhskaya 19, bld. 1, fl.2, Russia  
**OLYMPUS AUSTRALIA PTY LTD**  
 31 Gilby Road, Mount Waverley, VIC, 3149, Australia